

“My desire is for Alpha Delta Pi’s to have a wonderful experience of building lasting friendships during their college years at WSU.

Please join our

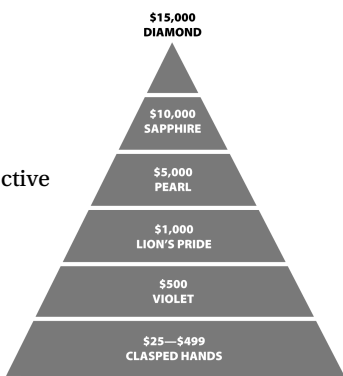
campaign that will keep our sisters “safe and secure” at Upsilon now and in the

future.” MERRELY MILLER BANTELL



Donations will fund the following projects:

- Installation of fire protective sprinkler system
- New roof
- Upgrade bathrooms
- Upgrade day rooms



CAMPAIGN GOAL \$100,000

All funds donated through the WSU Foundation are tax deductible. Checks made payable to *WSU Foundation, Upsilon-Safe and Secure*, 06154 on memo line.

Donations can be made in full or 2 or 3 year pledges. View new Chapter House improvements and our campaign progress at www.upsilonadpi.org. A link to the WSU Foundation can also be accessed through this web site. If you are interested in donating stock or want more campaign information, please contact:

Merrely Bantell, Campaign Chairperson,
msbantell@comcast.net

Gretchen Collins, Province Director, lionsadpi@aol.com

Sherry Kennedy, Housing Resource Director,
kennedysh@verizon.net

Donate on line at
www.wsufoundation.wsu.edu/giving/ click on “Search for fund...”, keyword - Upsilon

